



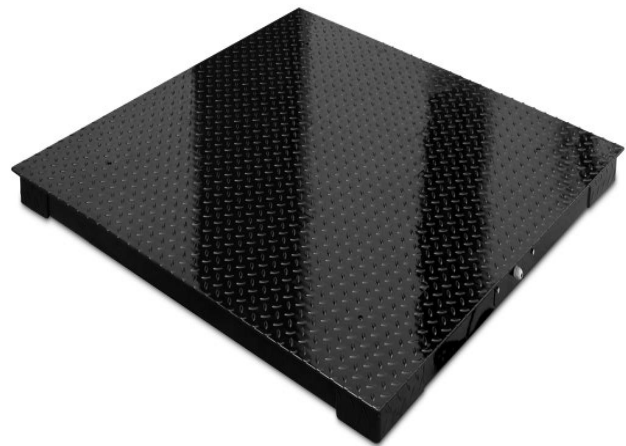
FM 52 E + XSB Floor Scale

Precision Heavy Duty Floor Platforms



FEATURES

- 24 Bit Sigma to Delta (Σ - Δ) Analog-To-Digital Converter
- Multi Functions Indicator
- Free Capacity and Division Setting
- 6 x 1-Inch Numeric Digits
- Tracking Bar to Show Applied & Remaining Capacity
- Calibration Password Control
- Power Up To 4 X 350 Ω Load Cells or 8 X 700 Ω Load Cells
- Dual Power Source: - By Built-In Rechargeable Battery or External Power Adaptor
- Lower Power Consumption.
Battery Operating Time = 200 Hours plus
- Built-in Real Time Clock
- Backlight, Built-In Rechargeable Battery, External Power Adaptor and Stainless Steel Wall/Desk Mount Holder Included



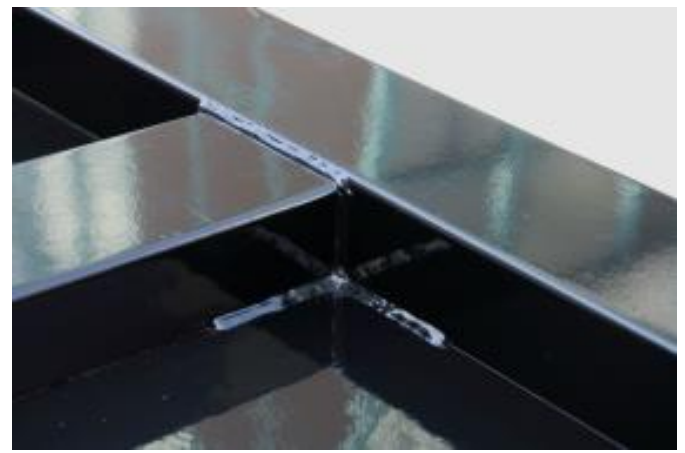
USER SELECTABLE PARAMETERS

- 5 x Filter Intensity Mode
- 3 x Backlight Mode
- 2 x Selectable Auto Tare Function
- 5 x RS232 Data Output Baud Rate
- 7 x Initial Zero Range
- 6 x Manual Zero Range
- 4 x Auto Zero Tracking Range
- 3 x Checkweighing Buzzer Output Mode

XSB is designed & built to meet a wide range of heavy traffic & high resolution industrial applications up to 6000kg.

It delivers un-exceptional reliability, accuracy and skin smooth performance to meet weighing, batching and counting needs.

Versatility, Functionality and Accuracy are always Built-in



Quality, Structural Strength & Accuracy are Safeguarded by

- Material Grade
- Material Thickness
- Tooling & Method used to handle Material Cutting, Blending ... etc.
- Smart & CNC Made Oversized Heavy Duty Load Cell Supporting & Mounting Blocks
- Strict Construction Accuracy Standards Applied
- Smart & High Quality Stainless Steel Junction Box used
- OIML / NTEP C3 Approved or FM Special Grade Load Cell
- High Density Channel Frame Allocation
- High Quality Epoxy Coating

Key Features

- Extremely Rigid Structural Steel Channel Frame Specifically Designed for Heavy Traffic
- Super Strong Channel Frame Provides Extra Protection by Enclosing the Load Cells, Cable and Junction Box Inside and away from Chemicals and Other Industrial Element
- Heavy-Duty Industrial design Threaded Eyebolt Holes for Easy Lifting
- Top-of-Floor or In-Floor Mounting
- Swivel Adjustable Feet Eliminate Weighing Errors due to Misalignment
- Construction Accuracy: - Better than 0.25%

Versatility, Functionality and Accuracy are always Built-in

XSB Series Precision Heavy Duty Floor Platforms

Specifications

Model No.	Platform Size (mm)		Load Cell		
XSB-0808 (A, N)	800 x 800		<div>Type: -<ul style="list-style-type: none">A: - OIML / NTEP C3 approvedN: - FM Special Grade</div> <div>Assignment: -<ul style="list-style-type: none">4 x 500kg for Max = 1T4 x 1000kg for Max = 2T4 x 1500kg for Max = 3T4 x 2000kg for Max = 5T4 x 3000kg for Max = 6T</div>		
XSB-0810 (A, N)	800 x 1000				
XSB-1010 (A, N)	1000 x 1000				
XSB-1012 (A, N)	1000 x 1200				
XSB-1212 (A, N)	1200 x 1200				
XSB-1215 (A, N)	1200 x 1500				
XSB-1515 A, N)	1500 x 1500				
XSB-1520 (A, N)	1500 x 2000				
XSB-2020 (A, N)	2000 x 2000				
Nominal Capacity (Max)	1T	2T	3T	5T	6T
Adjusted Eccentric Accuracy (kg)	0.05	0.1	0.2	0.5	0.5
Structural Strength	Maximum = 6T; Safe Overload = 7.2T				
Material & Structural Data	All Material = Mild Steel				
	Thickness: - <ul style="list-style-type: none">Top Plate Thickness ≥ 5.14mmUnderneath Columns Thickness ≥ 3.5mmLoad Cell Support Blocks ≥ 18.0 mm				
	Width: - <ul style="list-style-type: none">Width of Load Cell Mounting Columns = 120mmWidth of Reinforce Columns = 120mm				
	Overall Height: - <ul style="list-style-type: none">71mm (platform only)97mm (completed with Load Cells and Adjustable Feet)				
Construction Accuracy	Better than 0.25%				
Load Cell & Output	OIML / NTEP C3 Approved or FM Special Grade 40CrNiMoA Alloy Steel Load Cells, 3mV/V				
Junction Box	JB-46S Stainless Steel Junction Box				
Signal Cable	5m 6-wire Shielded Cable Included				
Operating Environment	-10 ~ 40°C (14 ~ 104°F) Non-condensed R.H. ≤85%				

In the interest of improvement, specifications may change prior to notice

Option

- Mild Steel Ramp
- Pit Installation Frame

Order Code

Model No.: - Nominal Capacity - Load Cell Type.

Examples -

- XSB-1010-1T-A for platform size = 1 x 1m; nominal capacity = 500kg; with approved load cells.
- XSB-1215-2T-N for platform size = 1.2 x 1.5m; nominal capacity = 2000kg; with FM Special Grade load cells.



Fidelity Measurement Co., Ltd.
<http://www.fi-measurement.com>
 e-mail: info@fi-measurement.com

REV.: XSB/18/01/02